

INSTRUCTIONAL EQUIPMENT REQUEST

2021-2022



LPC ADMINISTRATIVE SERVICES - REQUISITION INFORMATION PAGE

Internal Use

IE #: 2021-14

Total \$: 426.28

Requester Name: James Weston/Brian Hagopian Division Name: PATH

The equipment is: A Replacement An Upgrade New Equipment/Technology

SECTION 1: EQUIPMENT DESCRIPTION

Describe the specific equipment requested and how it will be used to replace, upgrade or provide new technology to LPC from what is currently in place:

The LPC Automotive Technology (AUTO) program is requesting an Autel MaxiTPMS TBE200 laser tire tread/brake disc scanner.

The MaxiTPMS TBE200 is a laser-enabled tire tread depth & brake disc wear examiner that provides users with quick and accurate wear measurements. Measure brake disc wear without having to remove tires. It features a 1.65" AMOLED super retina touchscreen, displaying measurement data curves in real-time. TBE200 provides uneven wear analysis and detailed replacement & maintenance suggestions for quick tire service. The TBE200 dual cameras enable users to document tire wear and damage and scan Tire Identification Number (TIN).

As you might imagine this nifty little tool will be New Technology to AUTO. It is something we see as becoming more commonplace in the automotive industry replacing older methods of tire and brake disc evaluation using depth and width micrometers.

Equipment Location Building: 800

Room: 808

Location Comments:

N/A

SECTION 1: EQUIPMENT DESCRIPTION (continued)

If applicable, describe the legal requirement, mandate, or safety concern for purchase of this equipment, making specific reference to the legal requirement or regulation:

N/A

SECTION 2: LPC MISSION STATEMENT AND LPC PLANNING PRIORITIES

LPC MISSION STATEMENT:

Las Positas College provides an inclusive, learning-centered, equity-focused environment that offers educational opportunities and support for completion of students' transfer, degree, and career-technical goals while promoting life-long learning.

LPC PLANNING PRIORITIES:

- ❖ Implement the integration of all ACCJC standards throughout campus structure and processes.
- ❖ Establish a knowledge base and an appreciation for equity; create a sense of urgency about moving toward equity; institutionalize equity in decision-making, assessment, and accountability; and build capacity to resolve inequities.
- ❖ Increase student success and completion through change in college practices and processes: coordinating needed academic support, removing barriers, and supporting focused professional development across the campus.

Specify how the equipment supports *LPC's Mission Statement and Planning Priorities:*

Acquiring this equipment supports our Mission Statement and Planning priorities by allowing our CTE students access to a rather exclusive and expensive tool regardless of their social or economic background.

SECTION 3: EDUCATIONAL ITEMS – PROGRAM REVIEW

Specify the educational programs this equipment supports:

This will support the AUTO program. More specifically our AUTO A4 (Suspension and Steering), AUTO A5 Brakes, AUTO INTR (Introduction) and auto open lab classes.

Will this equipment be a part of your upcoming Program Review or was it included last year? Please explain using the exact words from your Program Review. If not, explain why.

While this piece of equipment is not specifically mentioned in our 20-21 PR I believe Section 1, Part D, Item 3- "Building for Auto is in process" is our underlying motive for IER's for the next few years. At this time we are being advised there is no real budget allocated for new equipment to fill our new building, just basically moving our existing equipment into the new building, we plan on using the IER process to purchase things we can use now in our old building that will be shiny and new-ish for our new building in Fall 2023.

SECTION 4: TEACHING AND LEARNING

In detail describe evidence and data that equipment provides much needed benefit and enhancement to teaching beyond current capabilities.

Beyond our current capabilities this tool will help faculty to illustrate much more effectively the importance of evaluating a vehicles tire tread wear and brake disc wear during a vehicle inspection.

Describe in detail the impact this equipment will have on learning:

Having this equipment for our students to use will expose them to something that will save them time out in the field. In addition it is a great tool for students to learn how to more effectively communicate with potential customers often confusing or hard to understand components that require attention on a vehicle.

Each academic year, this equipment will impact: ⁸ ____ # of classes/sections ¹⁵⁰ ____ # of students

SECTION 5: OUTCOMES (SLOs)

Using your documented SLOs, specify how the equipment will enable student learning outcomes to be achieved beyond current capability.

An SLO from our AUTO A4 Suspension and Steering class reads...

- Upon completion of AUTO A4, the student should be able to obtain and interpret powertrain data related to the steering and suspension system.

An SLO from our AUTO A5 Brakes class reads...

- Upon completion of AUTO A5, the student should be able to obtain and interpret powertrain data related to the brake system.

Use of a tool like this will greatly enhance a students ability to obtain and interpret data from the suspension (tire wear) and braking (disc brake wear) in a more effective and understandable way.

SECTION 6: TOTAL COST OF OWNERSHIP (FINANCIAL & SUSTAINABILITY)

What is the potential life span of the requested equipment?

10-15 years.

If new storage is needed what are the storage requirements, location requirements, and costs associated with the new equipment: (NOTE: Specific storage costs should be detailed in the “Part A: Initial Start-up Costs” section below.)

N/A

If this equipment replaces old equipment but the old equipment will not be retired, are there on-going storage requirements, location requirements, and costs associated with the old equipment? If so, provide details.

N/A

What will be required to maintain the equipment, such as regular servicing or upkeep? (Specific on-going costs should be detailed in the “*Part B: On-Going Annual Operating Costs*” sections below as applicable.)

There are no additional maintenance costs involved.

Explain how this equipment meets or exceeds basic sustainability efforts and/or provides renewable resources to the college:

It is a robust, quality piece of equipment that will last a very long time. In addition it allows the user to detect when a vehicles suspension or brakes may need repair, these types of repairs typically will increase a vehicles fuel economy.

Part A: Initial Start-up Costs

<u>Item</u>	<u>Cost</u>	<u>Comments</u>
Equipment or Materials	390.00	
Taxes (9.5%)	37.05	
Shipping or Delivery Charge	8.00	
Installation Costs *		
Miscellaneous Costs:		
Facilities Modifications		
Operator Training		
Maintenance & Repair Training		
Storage		
Other: ⁰		
Vendor Discount		
Grand Total:	\$435.05	

Part B: On-Going Annual Operating Costs

<u>Item</u>	<u>Cost</u>	<u>Comments</u>
Annual Service or Maintenance		
Estimated Parts Replacement Per Year		
Outside Standardization or Calibration Costs		
Storage Costs		
New Supply Costs		
Maintenance & Repair Labor		
Licensing or Software		
Other: _____		
Annual Operating Costs:	0	

Indicate the source of funding for on-going annual operating costs:

N/A

Part C: Incremental Labor Costs

OPERATOR:

Indicate the key operator: Students

Is this in their current scope of duties? yes, after training from faculty

Indicate cost to train key operator (include in Initial Start-up Costs above): 0

Indicate amount of time per month key operator will use equipment: 2 hours

MAINTENANCE & REPAIRS:

Indicate the person performing maintenance and repairs: Lab Technician

Is this in their current scope of duties? Yes

Indicate cost to train for maintenance and repairs: 0

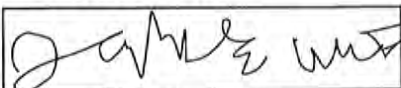
Indicate amount of time per month maintenance will be required: 30 seconds

SIGNATURE APPROVALS

Funded requesters will be expected to respond to a brief RAC feedback survey by a requested deadline.

- *Requests for computer-related equipment and printers will be reviewed by the LPC IT Department.*

REQUESTOR



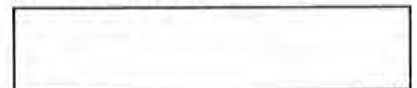
Date 9/8/21

DIVISION DEAN/MANAGER



Date 9/16/21

ADMIN SERVICES, VP



Date

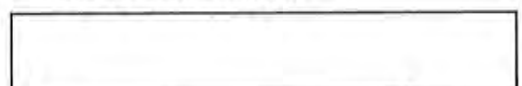
Admin Services will route as needed

IT MANAGER



Date

M&O DIRECTOR



Date



OPEN PO
Office of Administrative Services
Requisition Request Form

(Wait 5-10s)

Reset Submit

R _____ - _____

Fiscal Year	Vendor ID #	Vendor Name	Date Required		
21-22		Automotive Electronic Services	10/1/2021		
Deliver To		Room #	Return Copy of Requisition To		
James Weston/Brian Hagopian			James Weston/Brian Hagopian		
Seq	Item #	Description	Qty	Unit Price	Extended Cost
1		MaxiTPMS TBE200 Tread Depth Tool, SN:	1	\$ 390.00	\$ 390.00
2					\$ 0.00
3					\$ 0.00
4					\$ 0.00
5					\$ 0.00
6					\$ 0.00
7					\$ 0.00
8					\$ 0.00
9					\$ 0.00
10					\$ 0.00
11					\$ 0.00
12					\$ 0.00
13					\$ 0.00
14					\$ 0.00
15					\$ 0.00
Comments				Subtotal	\$ 390.00
				0.00% Tax	\$ 28.28
				Shipping	\$ 8.00
				Total Cost	\$ 426.28
FOAP to be Charged				%	Amount
- - - -				100	\$ 426.28
FUND	ORG	ACCOUNT	PROGRAM		
-	-	-	-		
FUND	ORG	ACCOUNT	PROGRAM		

James Weston/Brian Hagopian

Requestor (print name)

Date

Dean (signature)

Kristina Whalen

9/16/21

Date

Coordinator/Manager (signature)

Date

Vice President (signature)

9/22/21

Date

OFFICE OF ADMINISTRATIVE SERVICES USE ONLY

Reviewed: _____
Administrative Services

Verified: _____
Administrative Services Officer

Approved: _____
VP, Administrative Services

PO Number: _____

Budget Transfer #: _____

Entered: _____

Automotive Electronics Services, Inc.

www.AESwave.com

5465 E Hedges Ave
Fresno CA 93727

Voice: 5592927851

Fax: 559-292-3533

Quote # 10018

Date:	9/7/2021
-------	----------

Bill To:
Chabot-Las Positas Community Coll Dist Accounts Payable 5020 Franklin Dr Pleasanton CA 94588

Ship To
Chabot-Las Positas Community Coll Dist Accounts Payable 5020 Franklin Dr Pleasanton, CA 94588

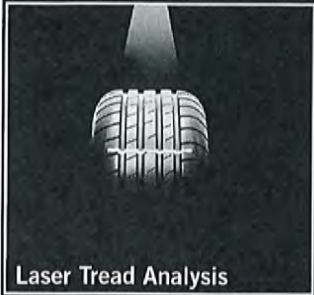
ITEM	DESCRIPTION	QTY	MSRP	Your Price	TOTAL
atl-TBE200 G UPS	MaxiTPMS TBE200 Tread Depth Tool , SN: UPS Ground CA Sales Tax 7.25%	1	\$495.00	\$390.00	390.00T 8.00 28.28
TOTAL					\$426.28

Carlos Menchu

AUTEL MaxiTPMS TBE100 & TBE200

TREAD DEPTH MEASUREMENT & BRAKE DISC WEAR ANALYSIS

EXPANDED TIRE HEALTH ANALYSIS & REPAIR - POWERED BY AUTEL DIAGNOSTICS



MaxiTPMS TBE100

Screen & Camera Specs

- 0.95" AMOLED Touchscreen
- 1 Megapixel Macro Camera

TBE100 Features & Functions

- Tire Tread Depth/ Brake Disc Wear Measurement
- No Need To Remove The Wheel During Measurement
- Laser Measurement with 0.1mm Accuracy
- Real-Time Measurement Data on Touchscreen
- Full Tread Measurement / Quick Check



MaxiTPMS TBE200

Larger Screen & Zoom Camera

- 1.65" AMOLED Super Retina Touchscreen
- 1 Megapixel Macro Camera
- 8 Megapixel Zoom Camera

All The Same Features as the TBE100 *Plus*

- Measurement Data Curve Display / Uneven Wear Analysis
- Detailed Replacement & Maintenance Suggestions
- Test Detail For Single Tire Tread / Brake Disc
- Tire Expiration Notice / Tire Recall Lookup / Scan DOT
- Take Photos of Tire Wear & Damage

COMING SOON



COMPATIBLE WITH ITS600

Unlock More TBE100 or TBE200 Features with the MaxiTPMS ITS600

- Comprehensive Test Report with TPMS (Requires ITS600)
- Uneven Wear Analysis (Requires ITS600 - TBE100 Only)
- Replacement & Maintenance Suggestions (Requires ITS600 - TBE100 Only)



AUTEL.COM • MAXITPMS.COM • MAXISYSADAS.COM
©2020 Autel Intelligent Technology Corp., Ltd. All Rights Reserved



AUTEL