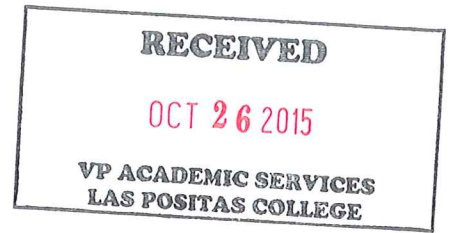


Instructional Equipment Request  
2015-16



FALL 17

SECTION 1: SUMMARY INFORMATION

Brief Title of the Request: Large Format Printer

Equipment Location: 4112

Name of Requestor: Titian Lish

Division/ Unit: ALSS/Theater

SECTION 2: EQUIPMENT DESCRIPTION

Check one of the following:

The equipment is:  A replacement  An upgrade  New equipment/technology

Describe the specific equipment requested and how it will be used to replace, upgrade or provide new technology to the college from what is currently in place? If there is a legal requirement, a mandate, or safety concern for purchase of this equipment, please discuss and make specific reference to that regulation/concern. (Cost data should be recorded in Sec. 7)

*Canon Image ProGraf Large Format Inkjet Printer. Printer Cover. Paper and Ink.*

SECTION 3: EDUCATIONAL ITEMS- PROGRAM REVIEW

Which educational programs or institutional purposes does this equipment support?

*Specifically, THEA 50L: Intro to Lighting Design, THEA 48A-B Technical Theater in Production: Intro and Beginning. Additionally it can be used by THEA 48D, and the performing arts programs to create in house banners and posters*

Is this equipment included in your Program Review?  Yes  No

If yes, please cut and paste the appropriate wording here. If not, explain why.

*At the initial writing of the Program Review the need had not been identified. THE PPU Update for 2015 was heavily focused for SLO and did not specifically identify equipment or upcoming funding needs as a needed update.*

SECTION 4: TEACHING AND LEARNING

Describe in some detail the impact this equipment will have on teaching and learning.

**Impact on teaching:** *This large format printer will enable the instructor of the tech theater and lighting design courses to print out scenic design, light plot posters, and banners. Currently we do not have that ability, but the industry standard for design is large format not small.*

**Impact on learning:** *Students will gain the ability to produce their work on a large scale, helping them locate mistakes and/or inconsistencies in the real world application of their designs, prior to the build or hang process of production*

Per academic year, this equipment will impact:

- 02 Number of classes or sections
- 25 Number of students

---

**SECTION 5: OUTCOMES (SLOs)**

By documenting your specific SLOs, how will equipment enable student learning outcomes to be achieved? What are the consequences related to learning outcomes if request is not funded?

*As students are developing their skill sets in technical theater and lighting design, they should be given the opportunity to see their work on a large scale professional format, so as to better assess skill progression and design problems before bringing them into production. Failure to fund the printer will mean continued costs by the dept for sending work offsite to be printed in large scale and student design work will continue to be at a sub-par professional expectation.*

**SECTION 6: LPC PLANNING PRIORITIES**

Please address how this equipment will serve the current LPC planning priorities.

*"Provide necessary institutional support for curriculum development and maintenance". – This equipment allows the technical theater instructors to further develop the skill set of the students on a technology relevant to their professional goals.*

**SECTION 7: TOTAL COST OF OWNERSHIP (FINANCIAL & SUSTAINABILITY)**

What is the potential life span of the requested equipment?: *5+ years with software compatibility*

What will be required to maintain the equipment, such as regular servicing or upkeep? Include these costs in initial and on-going costs below.

*Approx\$0 – The simple cleaning of the machine should make it easy to upkeep with minimal costs to the theater dept.*

Where will the equipment be used or housed? If new storage is needed, describe the storage, location and costs to provide for it. Include these costs in initial costs below.

*No new storage is needed. It will be stored in the Design Lab (4240)*

**Part A: Initial Start-up Costs**

	<b>Costs</b>	<b>Comments</b>
<b>Equipment or Materials</b>	<b>3518.61</b>	
<b>Shipping or Delivery charges</b>	<b>0.00</b>	Local dealer. Estimated cost unknown, if necessary
<b>Installation costs</b>	<b>0.00</b>	
<b>Costs to modify facilities</b>	<b>0.00</b>	
<b>Vendor Discount</b>	<b>0.00</b>	
<b>Any Other Costs-training, etc.</b>	<b>390.00</b>	<b>Service Contract</b>
<b>Local Sales Tax</b>	<b>334.22</b>	<b>Included in equipment</b>
<b>Grand Total Costs =</b>	<b>\$ 4242.83</b>	<b>Click the \$ and press F9 to calculate the grand total</b>

**A completed purchase order(s) and quote(s) for this total cost must be attached.**

**Part B: On-going Annual Operating Costs**

**Costs**

Annual service or maintenance contract	\$390.00	CarePak Pro 2 year plan
Estimated parts replacement each year	\$0.00	
Outside standardization or calibration costs	\$0.00	How often?
Storage costs	\$0.00	
New supply costs	\$0.00	
Any other costs, including labor	\$0.00	Specify
Annual Operating Costs =	\$390.00	

**Part C: Incremental Labor Costs**

Please describe who will be the key operator and who will perform the maintenance & repairs.

*The primary operators will be the technical theater instructor, instructional assistant, and stage technician*

Are these individuals already trained? If not, how will they be trained, how long is the training and is there a cost for the training. Please include the cost above in initial start-up. Is the maintenance, operation and repair currently within their scope of duties?

*Training via manual and video*

Estimate the amount of time required in a month to perform this maintenance or operation

*none*

Explain how this equipment meets or exceeds basic sustainability efforts and/or provides renewable resources to the college?

*With proper maintenance and use care, this printer should last many years, with subsequent printing costs for ink and paper being paid for by the theater dept.*

Funded requestors will be expected to respond to a brief RAC feedback survey by a requested deadline. Requests for computer related equipment & printers must be reviewed by LPC IT Department

IT Department Authorized Signature: \_\_\_\_\_

Signatures:

*[Signature]*  
Requestor

Date Originated: 10/19/15

*[Signature]*

Dean/Manager

Date Received 10/19/15

*[Signature]*

Vice President

Date Received \_\_\_\_\_

# imagePROGRAF

## SCANNER SPECIFICATIONS



### Scan Speed\*

- 24-bit Full Color @ 200 dpi: 1.67" (per second)
- 8-bit Grayscale and Monochrome @ 200 dpi: 10" (per second)

### Scan Modes

- 16.7-million Color RGB (24-bit)
- 256 color RGB adaptive indexed color palette (8-bit)
- 256-level Grayscale (8-bit)
- Black and White (1-bit)

### Color Space

Normalized RGB

### Resolution

- 2400 dpi (maximum)
- 600 dpi (optical)

### Scan Accuracy\*\*

+/- 0.1% ; +/- 1 pixel

### Maximum Image Width

40 Inches

### Maximum Media Width

41 Inches

### Maximum Scan Length

96 Inches

### Maximum Media Thickness

0.012 Inches (0.3mm)

### Media Feed System

Single large diameter precision ground drive roller; adaptive CIS media focus management and media guide mechanism; intuitive face-up, front-loading, and front-exit media path with side justification; automatic media size detection with reliable optical media sensors

### Digital Imaging Technology

- Contact Image Sensor (CIS) Technology
- 5x close-spaced "deep focus" CIS (25,000 pixels)
- 48-bit RGB digital color image capture
- 16-bit grayscale image capture
- Panchromatic monochrome and black and white
- Bi-directional extra long-life LED light system for optimum object illumination and instant-on scanning capability

### Digital Image Processing

- 2D Intelligent Adaptive Thresholding (IAT) (1-bit mode)
- Fixed Threshold Black and White (1-bit mode)
- Dynamic Normalization Application (DNA) with 16-bit super sampling

### User Status and One-Touch Operation

Center mounted LCD scanner control panel; walk-up operation and user selection of scanner mode with stop, forward, rewind, scan, and copy buttons; local language options, panel overlay, and Magnetic Media Guide

### Included Software

SmartWorks MFP scan-to-file, copy, e-mail with real-time image viewer. Supports TIFF, JPEG, TIFF G4, and PDF.

### Operating System

Windows 7 Professional (64-bit)

### User Maintenance

Installable plug-n-play scanner; simple cleaning

### Scanner Interface Kit

USB 2 Hi-speed

### Operating Environments

10 - 30°C, 35-80% RH, non-condensing

### External Power Supply

100-250 VAC autosensing +/- 10%, 50-60 Hz

### Scanner Power Consumption

- 40Wh (Scanning)
- 4.2Wh (Stand-by)

### Compliances

CB, CE, FCC, UL, RoHS, ENERGY STAR®

### MFP Dimensions

Height: Swing arm high: 63"  
Swing arm low: 56.2"  
Straight arm: 68.2"  
Width: With swing arm extended: 78.5"  
With straight arm: 61.2"  
Depth: Flat stacker: 47.3"  
Regular basket: 38.4"  
Closed: 31.2"

### What's In The Box?

- imagePROGRAF Printer\*\*\*
- Ci C40 Scanner with power cord and USB 2.0 Cable (Scanner to Server)
- 2 Meter USB Cable (Server to Printer)
- Ci C40 MFP Stand
- Ci C40 MFP Stand Assembly Instructions
- SmartWorks MFP Software
- Computer
- Flat Panel Touch-screen Display
- Installation and Operation Manual
- Operator Manual on CD-ROM

\* The scan rate is proportional across the full range of resolutions supported by the scanner. Actual scan times will depend on the host system performance. Quoted top speeds may be limited by the effective bandwidth of the USB 2 and is not guaranteed for all media types.

\*\* The quoted scan accuracy may vary depending on the operating environment and the thickness of the media.

\*\*\* Please refer to [www.usa.canon.com/imageprograf](http://www.usa.canon.com/imageprograf) for specifications for imagePROGRAF printer models.

**Canon**  
image*ANYWARE*

1-800-OK-CANON  
[www.usa.canon.com](http://www.usa.canon.com)

Canon U.S.A., Inc.  
One Canon Plaza  
Lake Success, NY 11042

As an ENERGY STAR® Partner, Canon U.S.A., Inc. has determined that this product meets the ENERGY STAR guidelines for energy efficiency. ENERGY STAR and the ENERGY STAR mark are registered U.S. marks. CANON, IMAGEPROGRAF, and the GENUINE logo are registered trademarks of Canon Inc. in the United States and may also be registered trademarks or trademarks in other countries. IMAGEANYWARE is a trademark of Canon. All other referenced product names and marks are trademarks of their respective owners and are hereby acknowledged. Some items may not be available at this time; please check for availability. Specifications and availability subject to change without notice. All printer output images are simulated. MFP shown with iPF765 printer.  
©2012 Canon U.S.A., Inc. All rights reserved.

0412-iPF765/760MFP-PDF-NR



# imagePROGRAF MFP

## TECHNICAL INNOVATIONS

Built with the user in mind, the imagePROGRAF iPF765/760 MFP Systems include features that make them easy and practical to use.

### HARDWARE DESIGN

The scanner stand is designed to connect directly to the printer stand to create a **one-piece structure** that helps reduce the total footprint of the iPF MFP. The stand gives you the flexibility to use as an "all-in-one" configuration or be set up as an independent scanner stand. There also are options for the monitor position incorporated into the new design. You can choose which side of the stand to place the monitor and whether to use a straight or a swing arm. When using the swing arm, you can choose between two height options. This single-stand design eliminates the need to move the printer and scanner, piece by piece, when setting up or relocating the MFP. The integrated **Flat Stacker/Basket** provides the capability to neatly stack up to twenty 24" x 36" plain paper prints. The basket can be configured as a regular basket, a small stacker, or a larger flat stacker/basket.

### EMBEDDED SECURITY

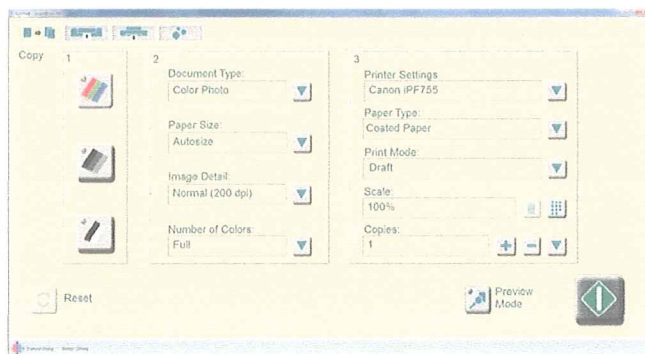
A new **interface lock system** enhances the security functions of the printer. This feature provides an option for administrative control to restrict usage to the printer. The imagePROGRAF iPF765 printer is equipped with a hard drive erase feature that completely erases data sent to the printer from the printer's hard disk. This **highest level of erasure** meets the U.S. Department of Defense requirements (DoD5220.22-M) for erasure of disk media.

### CIS SCANNING TECHNOLOGY

The imagePROGRAF iPF MFP uses CIS technology to capture the finest image detail in technical documents, maps, sketches, hand-annotated drawings, and complex schematics. With true **600-dpi optical resolution**, you can achieve exceptional monochrome performance with very sharp, clean images as well as high-definition color reproduction. And dynamic preview ensures that scans and copies match original hard-copy documents every time.



### INNOVATIVE SOFTWARE



The included SmartWorks MFP software provides users with an easy-to-use interface that requires less interaction between the user and the software. This will reduce the time spent preparing each print and streamline the process as well. The interface includes labels for each button, making printing a file or scanning to copy or file/e-mail as easy as 1-2-3. The large preview screen makes it easier for users to make edits and see dynamic changes on-screen.

#### Large preview screen

- Make edits and see dynamic changes on-screen
- Press green button and apply all changes to original scanned file

#### Image Editing Capabilities

- Manual Deskew Feature
- Brighten Feature
- Crop Feature
- Zoom In/Out Feature

### HIGH-QUALITY OUTPUT

Print complex schematics with super-clear small text fonts and crisp lines over color backgrounds, even on uncoated technical papers. A super-high-density print-head ejects tiny 4pl droplets of ink that consistently produce **2400 x 1200 dpi output with fine lines within +/- 0.10% accuracy** and as thin as 0.02mm. And Canon's unique 5-color Reactive ink-set delivers durable, smudge-resistant prints with sharp lines and text, bold colors, and smooth fills.

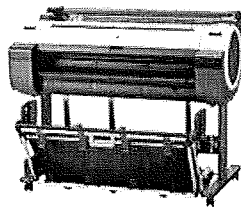
With four lines of imagePROGRAF large-format solutions... whatever your needs, Canon has the answer.

 B&H Photo Video Pro Audio **The Professional's Source**  
800.606.6969/212.444.6615

**FREE EXPEDITED SHIPPING ON ORDERS OVER \$49.00**  
for qualified items

### MY CART

Select All    Remove    Move to List    Quantity    Price



**Canon imagePROGRAF  
iPF760 36" Large Format  
Inkjet Printer**

B&H #CAIPF760 • MFR  
#6470B002AA

1    \$2,399.99x

Update

**FREE SHIPPING (USA)**

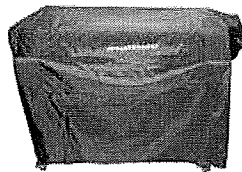
Square Trade **Protection plan:**

**\$109.99**

2 Year Protection plan

[Compare all options](#)

**Item Total: \$2,509.98**



**Canon DC36-2 Dust Cover**

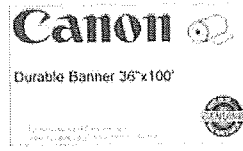
B&H #CADC362 • MFR #1480B004

**Free Expedited Shipping**

1    \$99.99x

Update

**Item Total: \$99.99**

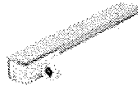


**Canon Durable Matte Polypropylene Inkjet Banner Paper (36" x 100' Roll, 130 ...**

B&H #CADB36100 • MFR #0834V778 [Update](#)  
**Free Expedited Shipping**

1 \$109.95x

**Item Total: \$109.95**



**Canon Glossy Photo Inkjet Roll Paper (36" x 100')**

B&H #CAGPP36100Q • MFR #2047V129

**Free Expedited Shipping** [Update](#)

2 \$113.99x

**Item Total: \$227.98**



**Canon Hi Res Coated Bond Paper (120gsm) for Inkjet - 36" x 100'**

B&H #CAHRCB36100 • MFR #1099V650

**Free Shipping for this Item** [Update](#)  
**Free Expedited Shipping on Orders over \$49**

6 \$46.95x

**Item Total: \$281.70**



**Canon PFI-104M Photo  
Magenta Ink Tank (130 ml)**

B&H #CAPFI104M • MFR #3631B001AA 2 \$66.50x

**Free Expedited Shipping** Update

Item Total: \$133.00



**Canon PFI-102BK Black Ink  
Tank (130 ml)**

B&H #CAPFI102BK • MFR #0895B001AA 2 \$66.50x

**Free Expedited Shipping** Update

Item Total: \$133.00



**Canon PFI-102Y Yellow Ink  
Tank (130 ml)**

B&H #CAPFI102Y • MFR #0898B001AA 2 \$66.50x

**Free Expedited Shipping** Update

Item Total: \$133.00





**Canon PFI-102C Cyan Ink Tank (130 ml)**

B&H #CAPFI102C • MFR #0896B001AA 2 \$66.50x  
**Free Expedited Shipping**

Update

Item Total: \$133.00



**Canon PFI-102MBK Matte Black Ink Tank (130 ml)**

B&H #CAPFI102MBK • MFR #0894B001AA 2 ~~\$66.50x~~  
**Free Expedited Shipping**

Update

*Duplicate*

Item Total: \$133.00

**Shipping**

**Store Pickup**

NYC SuperStore

**SubTotal: \$3,894.60**

Sales Tax: Choose Above

Shipping: Choose Above



Sales: 800.800.6869 or 212.444.8816 Customer Service: 800-221-5743 or 212-330-7765

Please note that B&H does not process web orders from Friday evening to Saturday evening.

© 2000-2013 B & H Photo & Electronics Corp.

# LAS POSITAS COLLEGE Equipment, Apparatus and Service Requisition #R

FOR REIMBURSEMENT: List payee name & ssn.

B&H Photo Video		DATE WRITTEN		DATE REQUIRED		DIVISION/ DEPARTMENT		FOR INVENTORY PURPOSES INCLUDE ROOM # WHERE		FOR OFFICE USE ONLY	
Titian Lish		10/12/2015		8/1/2015		THEATER/ALSS		4240		RETURN COPY OF REQUISITION TO:	


DESCRIPTION	(PRODUCT, TYPE, SIZE, COLOR, STOCK NUMBER)	UNIT	QTY	UNIT PRICE	EXTENDED COST
Canon Image ProfGRAF 760		ea	1	\$ 2,399.99	\$ 2,399.99
Canon DC36-2 Dust Cover		ea	1	\$ 99.99	\$ 99.99
Canon Matte Banner Paper		ea	1	\$ 109.95	\$ 109.95
Canon Glossy Photo Paper		ea	2	\$ 113.99	\$ 227.98
Cannon Hi Res Bond Paper		ea	6	\$ 46.95	\$ 281.70
Canon PFI-104M Magenta Ink Tank		ea	2	\$ 66.50	\$ 133.00
Canon PFI-102BK Black Ink Tank		ea	2	\$ 66.50	\$ 133.00
Canon PFI-102C Cyan Ink Tank		ea	2	\$ 66.50	\$ 133.00
Service Plan *no tax on plan		ea	1	\$ 390.00	\$ 390.00
Deliver To:	Las Positas College 3000 Campus Hill Drive Livermore, Ca 94551				
Comments:					
				Subtotal	\$ 3,908.61
				Tax	\$ 0.0950
				Shipping (if available):	\$ 371.32 - 334.22
				<b>TOTAL COST</b>	<b>\$ 4,242.83</b>


Original invoices and receipts must be attached for payment. Include current taxes unless incorporated in price.

ACCOUNT # \_\_\_\_\_ FUND \_\_\_\_\_ ORG \_\_\_\_\_ ACCT \_\_\_\_\_ PROGRAM \_\_\_\_\_

Business Office 4279.93

APPROVALS

 Supervisor/Coordinator/Director

 Dean/VP/President