



# Guided Pathways

STUDENT SUCCESS TEAMS  
PHASES BEING CONSIDERED FOR  
IMPLEMENTATION

---

Student Success Team CoP Meeting March 22, 2022

# Academic & Career Pathways

There's a pathway for everyone at Las Positas College!

Click a pathway to learn more.



Visual Arts,  
Performing Arts and  
Design



Business,  
Economics,  
Entrepreneurship,  
and Information  
Technology



Society, Culture, and  
Human  
Development



Language,  
Literature, and  
Communications  
Studies



Health, Wellness,  
and Public Safety



Science, Technology,  
Engineering, Math,  
and Environment



Advanced  
Manufacturing and  
Transportation



Undecided - Let's  
Explore!

**Imagine if all of our students were organized into one of our Academic and Career Pathways and supported by a Student Success Team.**



# Academic & Career Pathways

There's a pathway for everyone at Las Positas College!

Click a pathway to learn more.



Visual Arts,  
Performing Arts and  
Design



Business,  
Economics,  
Entrepreneurship,  
and Information  
Technology



Society, Culture, and  
Human  
Development



Language,  
Literature, and  
Communications  
Studies



Health, Wellness,  
and Public Safety



Science, Technology,  
Engineering, Math,  
and Environment



Advanced  
Manufacturing and  
Transportation



Undecided - Let's  
Explore!

## Imagine if Student Success Teams for each Pathway are given:

- Websites that organizes key supports for student success
- Canvas sites for pathway communication and networking
- Pathway specific data sets about students along their journey
- Data sets disaggregated by demographics to reduce equity gaps

**...then helping our students will have just gotten a lot easier!**

# DON'T YOU WISH IT WAS THIS EASY?



LPC Student Government Officers advocating for making our students' invisible questions, needs, barriers, and unknowns visible for proactive support.

# Academic & Career Pathways

There's a pathway for everyone at Las Positas College!

Click a pathway to learn more.



Visual Arts,  
Performing Arts and  
Design



Business,  
Economics,  
Entrepreneurship,  
and Information  
Technology



Society, Culture, and  
Human  
Development



Language,  
Literature, and  
Communications  
Studies



Health, Wellness,  
and Public Safety



Science, Technology,  
Engineering, Math,  
and Environment



Advanced  
Manufacturing and  
Transportation



Undecided - Let's  
Explore!

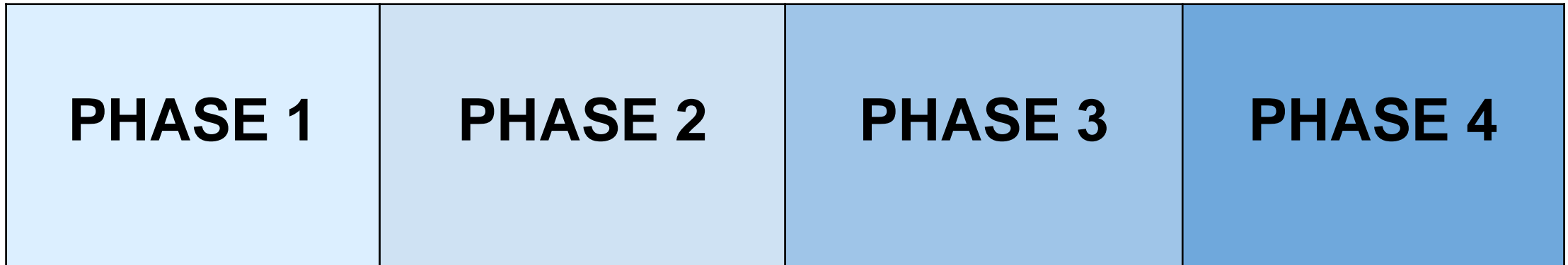
## Student Success Teams:

- Comprised of individuals from **Academic Services, Student Services, Administrative Services, Student Mentors**
- Use data for timely **student interventions**
- Provide **equity-infused practices and holistic support** along the student journey

# STUDENT SUCCESS TEAMS

---

## PHASES BEING CONSIDERED FOR IMPLEMENTATION



Phases will be **gradual** and driven by infrastructure to support work **strategically** transforming into **sustained, interactive** and **proactive work** that makes **supporting students easier** and our **work and time streamlined**.



# STUDENT SUCCESS TEAMS PHASE 1

Infrastructure	Pathway Website
<p data-bbox="53 382 639 558"><b>Student Success Team phase addresses:</b></p> <p data-bbox="53 636 614 743"><b>“What steps do I need to take next?”</b></p> <p data-bbox="53 822 626 872"><b>“Who cares about me”</b></p> <p data-bbox="53 951 494 1058"><b>“How can I afford college?”</b></p> <p data-bbox="53 1143 417 1258"><b>and Enhances Belonging</b></p>	<p data-bbox="665 501 2372 658">- Pathway Website is created for all Pathways that addresses key questions and barriers for students.</p>

# STUDENT SUCCESS TEAMS PHASE 1

## First Look at Pathway Website

**START**  
Your Experience

**LEARN**  
Areas of Study

**AFFORD**  
Your Education

**SUCCEED**  
Support & Advice

**CONNECT**  
Campus Life

### Pathway Name

Brief description with discipline names included.

Welcome to (Pathway Name)!

Go to:

Degree & Certificate Maps

Checklist for Success

Career Outlook



Go to:

[Degree & Certificate Maps](#)

[Checklist for Success](#)

[Career Outlook](#)

## Degree & Certificate Maps

### Degrees

[Biology](#)  
Associate in Science for Transfer

[Geography](#)  
Associate in Arts for Transfer

[Geology](#)  
Associate in Science for Transfer

[Mathematics](#)  
Associate in Science for Transfer

[Biology](#)  
Associate in Arts

[Biology UC Pathway](#)  
Associate in Science

[Biology: Allied Health](#)  
Associate in Arts

[Chemistry](#)  
Associate in Science

### High Unit Certificates

≥ 18.0 units

[Artificial Intelligence](#)  
Certificate of Achievement

[Biology UC Pathway](#)  
Certificate of Achievement

[Civil/Mechanical Engineering](#)  
Certificate of Achievement

[Computational Biology](#)  
Certificate of Achievement

[Computer Programming](#)  
Certificate of Achievement

[Computer Programming for the Web](#)  
Certificate of Achievement

[Digital Forensics Examiner](#)  
Certificate of Achievement

[Electrical Engineering](#)  
Certificate of Achievement

### Low Unit or Noncredit Certificates

< 18.0 units

[Data Analytics](#)  
Certificate of Achievement

[Geology](#)  
Certificate of Achievement

[Geology Major](#)  
Certificate of Achievement

[Occupational Safety](#)  
Certificate of Achievement

[Occupational Safety and Health](#)  
Certificate of Achievement

[Ornamental Horticulture](#)  
Certificate of Achievement

[Wine Hospitality](#)  
Certificate of Achievement

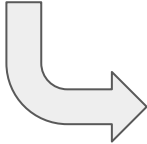
Don't see the program you're looking for? [Search Here](#)

Go to:

Degree & Certificate Maps

Checklist for Success

Career Outlook



QR CODE  
To get all

## My Semester To-Do List

### Before my First Semester

- [Apply](#) to the College
- Retrieve your W Number
- Login to [Zoneemail](#) and [CLASS-Web](#)
- Complete your [Orientation](#)
- Take [Assessments](#)
- View a general map of your [Academic and Career Pathway](#)
- Create a personalized first semester plan with a [Counselor](#)
- [Register/Enroll](#) in your Coursework
- Apply for Financial Aid ([FAFSA](#) or [Dream Act Application](#))
- Pay [Fees](#)
- Purchase/Rent [Books](#)
- Access [Canvas](#)
- Meet your Success Team
- Learn about additional [student support services](#)  
(DSPS, Veterans, Black Cultural Resource Center, etc.)

### In my First Semester (Fall)

- Take a Career Assessment in [Career Coach](#)
- Make an [appointment](#) with your Counselor to create a comprehensive Student Educational Plan (SEP)
- Talk to your [Financial Aid Advisor](#) to understand your Financial Aid package
- Tour the [Tutorial Center](#)
- Learn how [General Education](#) Works
- Create a profile for the LPC [job and internship board \(handshake\)](#)

### In my Second Semester (Spring)

- Visit the [Career and Transfer Center](#) to research and discuss transfer schools of interest
- Meet with your [Counselor](#) to confirm your major, learn about Transfer Admission Guarantees (TAG), update your education plan, transfer timeline and to understand your degree/transfer timeline
- Complete [Scholarship](#) Applications (February)
- Create a [LinkedIn](#) Profile and build a resume on [Career Coach Resume Builder](#)
- Schedule tours with colleges you are interested in transferring to in-person or virtually ([CSU](#) / [UC](#))
- Learn how [Major Requirements](#) work

### In my Third Semester (Fall)

- Meet with a [Financial Aid Advisor](#) to financially plan for college after transfer
- Make an [appointment](#) with your Counselor to finalize your education plan
- Add transfer tasks to your calendar (see QR Code above)
- Research and apply for internships/jobs using LPC's job and internship board ([handshake](#)) and visit the [Career and Transfer Center](#)
- Apply for Transfer ([UC](#) / [CSU](#) Applications 10/1 - 11/30)

### In my Fourth Semester (Spring)

- Apply for [Graduation](#) (if you are obtaining a degree/certificate)
- Apply for Financial Aid (due March 2nd) - ([FAFSA](#) or [Dream Act Application](#))
- Learn how to be successful at a four-year institution
- Let LPC know where you are going after graduation/transfer and become part of our Alumni Network!
- Attend [Graduation!](#)

Go to:

Degree & Certificate Maps

Checklist for Success

Career Outlook

## Career Outlook

Visit [Career Coach](#) to take a career assessment, and search for salary and career information.

### Biology


||

In our area, people working as...

← Geneticians →

Typically Make  
**\$45.02/hr**

[Learn More](#)

POWERED BY  Emsi

### Chemistry


||

In our area, people working as...

← Chemical Engineers →

Typically Make  
**\$44.82/hr**

[Learn More](#)

POWERED BY  Emsi

### Engineering


||

In our area, people working as...

← Electronic Drafters →

Typically Make  
**\$27.46/hr**

[Learn More](#)

POWERED BY  Emsi

### Physics

||

In our area, people working as...

← Nuclear Engineers →

Typically Make  
**\$51.02/hr**

[Learn More](#)

POWERED BY  Emsi





***10 minutes***

# Breakout Group Activity

## *Phase 1 Website & Milestone Supports*

### **Pick a breakout room:**

- Zoom Group 1: Prototype of Pathway Websites
- Zoom Group 2: “My Semester To-Do List”

### **Suggested discussion questions:**

- Does it address key questions and barriers for students?
- Suggestions for content? Layout?
- How do you envision helping students with this information?

**Take notes in this [Google Document!](#)**

# Academic & Career Pathways

There's a pathway for everyone at Las Positas College!

Click a pathway to learn more.



Visual Arts,  
Performing Arts and  
Design



Business,  
Economics,  
Entrepreneurship,  
and Information  
Technology



Society, Culture, and  
Human  
Development



Language,  
Literature, and  
Communications  
Studies



Health, Wellness,  
and Public Safety



Science, Technology,  
Engineering, Math,  
and Environment



Advanced  
Manufacturing and  
Transportation



Undecided - Let's  
Explore!

## PHASE 1

### Student Success Team Members

- Comprised of individuals from **Academic Services, Student Services, Administrative Services, Student Mentors**

# STUDENT SUCCESS TEAMS PHASE 1

Infrastructure	Pathway Website
<p data-bbox="84 396 665 568"><b>Student Success Team phase addresses:</b></p> <p data-bbox="84 648 639 758">“What steps do I need to take next?”</p> <p data-bbox="84 839 652 886">“Who cares about me”</p> <p data-bbox="84 968 524 1078">“How can I afford college?”</p> <p data-bbox="84 1159 443 1269"><b>and Enhances Belonging</b></p>	<ul data-bbox="728 389 2423 1325" style="list-style-type: none"><li data-bbox="728 389 2423 486">- Pathway Website is created for all Pathways addresses key questions and barriers for students <b>and identifies Student Success Team Members.</b></li><li data-bbox="728 561 2423 658">- <b>Pathway Counseling Faculty</b> work with students within pathway to complete EdPlans with training in their pathway</li><li data-bbox="728 761 2423 915">- <b>Discipline Faculty</b> choose to be identified as a SST member and dedicate <i>at least one</i> Office Hour(s) for drop-in support Pathway student questions/needs with persistence project-like support.</li><li data-bbox="728 1018 2423 1115">- <b>Peer Students and Student Assistants</b> to communicate with peers as desired.</li><li data-bbox="728 1218 2423 1315">- <b>Additional Members</b> around campus are encouraged to identify as a SST member and contact information is published.</li></ul>



# STUDENT SUCCESS TEAMS PHASE 1

**Meet your Student Success Team:** We are here to support and guide you! ([add Contact Me](#) button that contains directory info for each member)



**SCIENCE, TECHNOLOGY,  
ENGINEERING  
& MATH**  
Brian Gosney  
[bgosney@sierracollege.edu](mailto:bgosney@sierracollege.edu)



**SCIENCE, TECHNOLOGY,  
ENGINEERING  
& MATH**  
Kristen Kawada-Lopez  
[kkawada@sierracollege.edu](mailto:kkawada@sierracollege.edu)



**SCIENCE, TECHNOLOGY,  
ENGINEERING & MATH**  
David Miramontes  
[dmiramontes@sierracollege.edu](mailto:dmiramontes@sierracollege.edu)



**SCIENCE, TECHNOLOGY,  
ENGINEERING  
& MATH**  
Wayne Robinson  
[wrobinson4@sierracollege.edu](mailto:wrobinson4@sierracollege.edu)

**Coming Soon!**



**PEOPLE, CULTURE  
& SOCIETY**  
Aaron Lawrence  
[alawrence5@sierracollege.edu](mailto:alawrence5@sierracollege.edu)



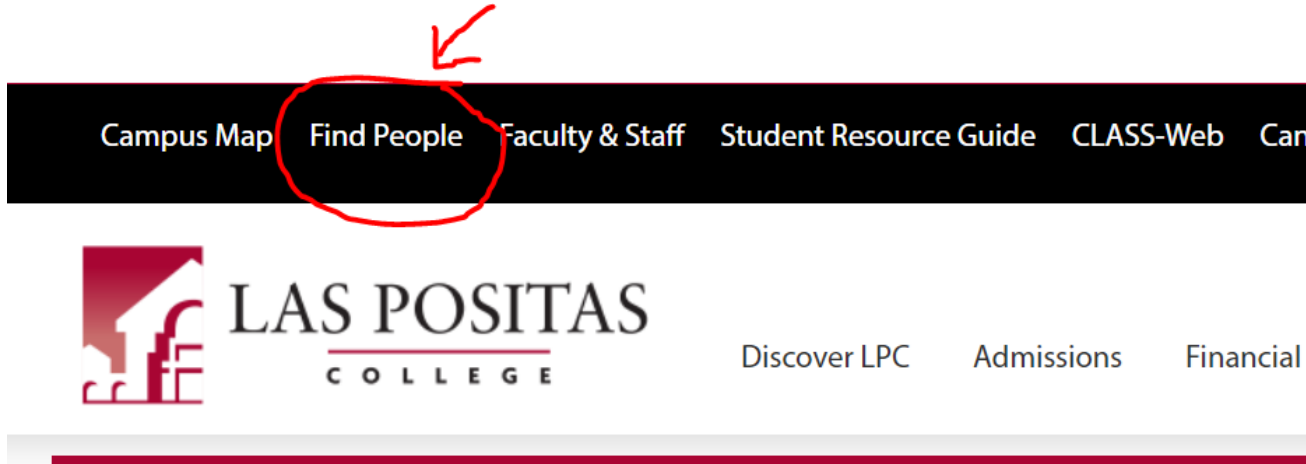
**PEOPLE, CULTURE  
& SOCIETY**  
Kelly Chambers  
[kchambers6@sierracollege.edu](mailto:kchambers6@sierracollege.edu)



**PUBLIC SAFETY, HEALTH  
& WELLNESS**  
Katie Juras  
[kjuras@sierracollege.edu](mailto:kjuras@sierracollege.edu)

# STUDENT SUCCESS TEAMS PHASE 1

## Coming Soon!



Example of a  
Discipline Faculty  
Member choosing to  
be a Success Team  
Member

**Kristy Woods**

**Professor**

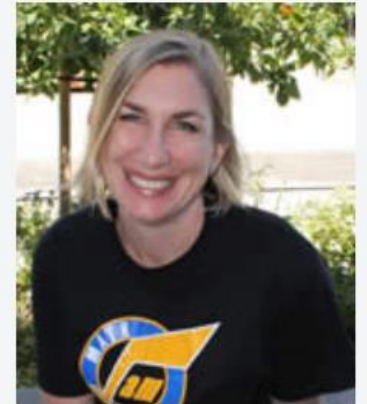
**Mathematics**

E-mail: [kwoods@laspositascollege.edu](mailto:kwoods@laspositascollege.edu)

Phone: (925) 424-1329

Office: 240-E

Join me for my [STEME Pathway](#) Hours!  
Tuesdays 1 - 2pm in the [Tutorial Center](#) or online via [Zoom](#).



# STUDENT SUCCESS TEAMS PHASE 1

*Goal is to start Phase 1 Fall 2022*

Infrastructure	Pathway Website
<p><b>Student Success Team phase addresses:</b></p> <p><b>“What steps do I need to take next?”</b></p> <p><b>“Who cares about me”</b></p> <p><b>“How can I afford college?”</b></p> <p><b>and Enhances Belonging</b></p>	<ul style="list-style-type: none"><li>- Pathway Website is created for all Pathways that identifies Student Success Team Members and addresses key questions and barriers for students</li><li>- Pathway Counseling Faculty work with students within pathway to complete EdPlans with training in their pathway</li><li>- Discipline Faculty choose to be identified as a SST member and dedicate <i>at least one</i> Office Hour(s) for drop-in support Pathway student questions/needs with persistence project-like support.</li><li>- Peer Students and Student Assistants to communicate with peers as desired.</li><li>- Additional Members around campus are encouraged to identify as a SST member and contact information is published.</li></ul>



# Breakout Group Activity

*Starting Phase 1 Fall 2022*



***15 minutes***

**What could starting Phase 1 entail at LPC for our different SST members and ancillary support?**

## **Pick a breakout room:**

- Zoom Group 1: Student Assistants/Peers to support Pathways
- Zoom Group 2: Pathway Counseling Faculty Member
- Zoom Group 3: Pathway SST Discipline Faculty Member
- Zoom Group 4: Classified and Ancillary Supports

# Breakout Group Activity

*Starting Phase 1 Fall 2022*



***20 minutes***

**What could starting Phase 1 entail at LPC?**

## **Suggested discussion questions:**

- What conversations or survey questions should our campus have around Phase 1?
- How can we best identify and sustain our “soft-handshakes” around campus?
- What could your chosen member need to confidently choose to be a SST Member in their Pathway?
  - What training or supports could be needed?

**Take notes in this [Google Document!](#)**





THE YEAR AHEAD – STUDENT SUCCESS TEAMS  
IT IS AN “US” THING